

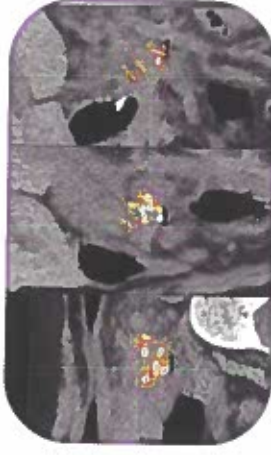
# How Does it Work?

---

Radium-224 is affixed onto small titanium sources. These sources are inserted directly into the tumor through an endoscopic EUS delivery system.

## SOURCE PLACEMENT FOR MAXIMAL TUMOR COVERAGE

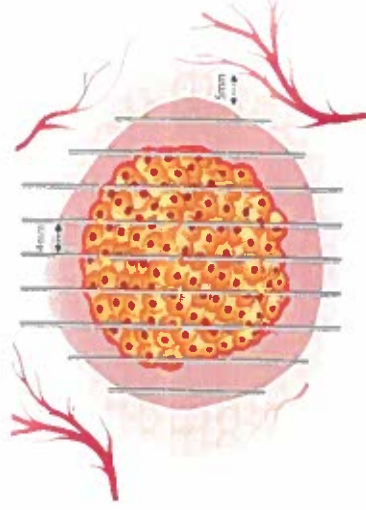
We use a treatment planning software to maximize tumor coverage which is customized for each patient. This allows the clinician to calculate the alpha-specific dosimetry for the desired plan before treatment, and then to verify the tumor coverage post treatment.



Treatment planning

## SOURCE GEOMETRICAL SPACING

The sources are placed into the tumor a few millimeters apart from each other, based on the specific tumor's characteristics.



Source size & alpha distribution