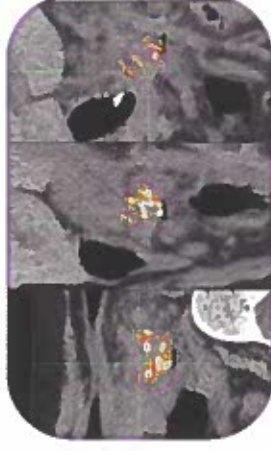


# How Does it Work?

Radium-224 is affixed onto small titanium sources. These sources are inserted directly into the tumor through an endoscopic EUS delivery system.

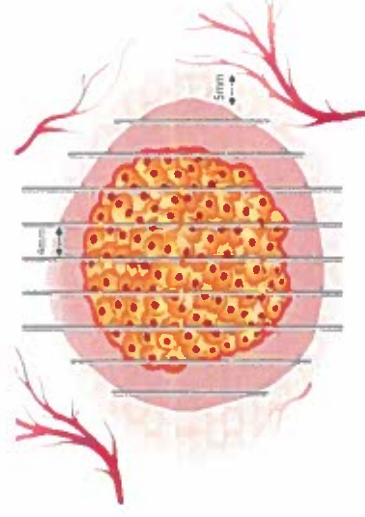
## SOURCE PLACEMENT FOR MAXIMAL TUMOR COVERAGE

We use a treatment planning software to maximize tumor coverage which is customized for each patient. This allows the clinician to calculate the alpha-specific dosimetry for the desired plan before treatment, and then to verify the tumor coverage post treatment.



Treatment planning

## SOURCE GEOMETRICAL SPACING



The sources are placed into the tumor a few millimeters apart from each other, based on the specific tumor's characteristics.



Source size & alpha distribution

## STANDARD ENDOSCOPIC INTRATUMORAL DELIVERY

### “Standard” technique

Natural extension of the skillset of a trained EUS endoscopist

### User-friendly

Intuitive technique

### Time efficient

Typical procedure of ~45 minutes



## ANIMATION VIDEO OF THE PROCEDURE



Watch the video

